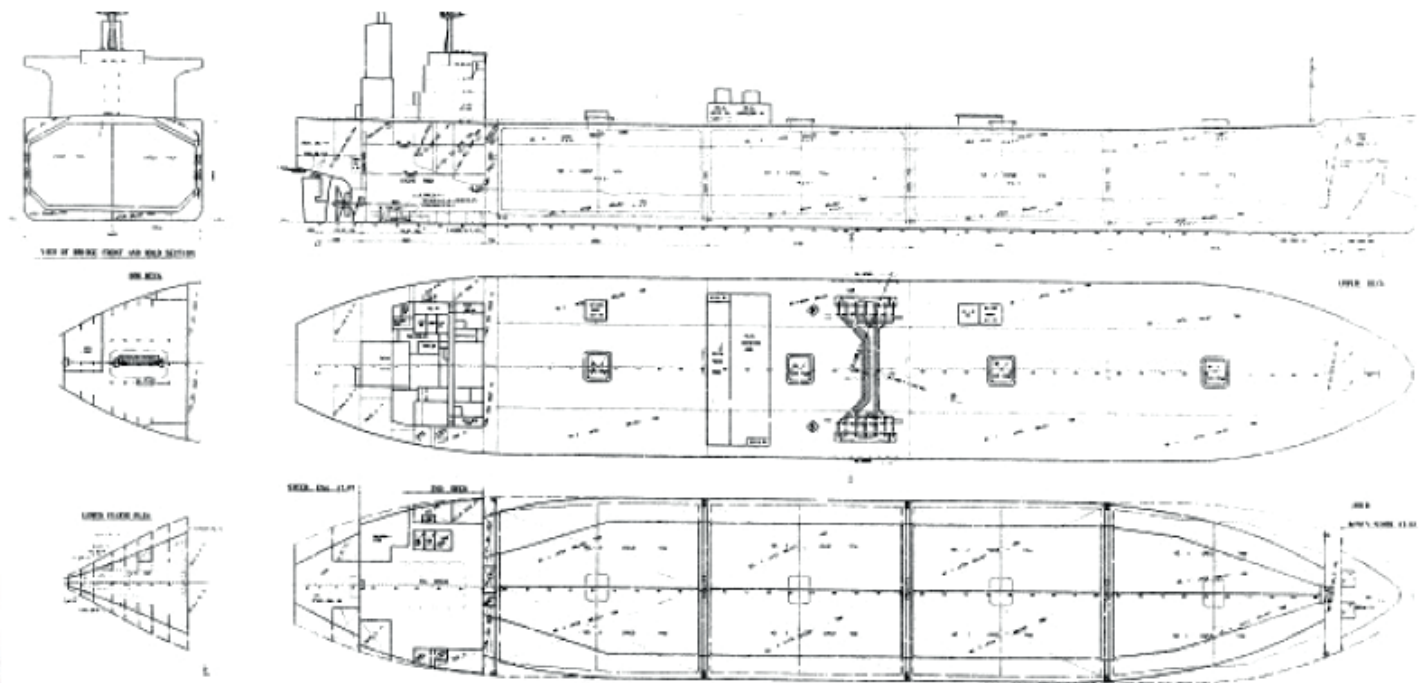


MADO

GENERAL CHARACTERISTICS



GENERAL CHARACTERISTICS

Owners:	KAVOURI SHIPPING & TRADING CO. S.A.
Built:	Hyundai, Heavy Industries, Ulsan, Korea
Flag:	Marshall Islands
Class:	Lloyds Register
Call Sign:	9V2312
International:	47,347 / 18,642
IMO:	9694622
USCG:	YES
RINA:	N/A
MOT:	YES
LOA:	225.13 m
LBP:	220.00 m
Breadth Moulded:	36.64 m
Depth Moulded:	22.22 m
DWT, Summer:	54,596. mtons
Draft, Summer:	12.02 m
Draft, Propane:	11.80 m
Main Engine:	Vertical 2-cycle, Cross Head type, Diesel Engine HHI MAN B&W 6G60ME-C 9.2
Maximim Power:	12,400 kw at 92 rpm
Fuel Grade:	ISO 8217:2005 RMG380
Consumption/day:	47.5 tons
Speed (Average):	16.25 knots
Auxiliaries:	Vertical 4-cycle, Single Acting, Trunk Piston type Diesel Engine, HHI HIMSEN 8H21/32
Power:	1,280 kw x 720 rpm
Total Available:	3.840 kw
Grade/Consumption:	ISO 8217:2005 RMG380 / 5.5 ton/day
Bunker Capacity:	IFO: 2,389.8 m ³ (98%) MGO: 572 m ³

CARGO PLANT AND HANDLING EQUIPMENT

MARVS:	0.275 bar g @ sea going & 0.40 bar g @ harbor
Min.Temperature:	-50°C
Max.Specific Gravity:	610 kg/m ³
Max.Vacuum:	0.0 bar.g
Cargo Pumps:	Eight (8) Electric Motor Driven Deep Well Vertical, Centrifugal Electric Motor Driven Deep Well Vertical
Cargo Compressors:	Three (3) Vertical, Three Stage, Piston, Oil free type, Burckhardt Compression AG, 3K160-3K
Cargo Heater:	Horizontal Shell and Tube, 600 m ³ /hr from -42°C to 5°C at Sea Water Temperature +15°C
Booster Pumps:	2 set Horizontal Centrifugal Hamworthy Kse Svanehoj A/S NMB 150 C, 600 m ³ /hr x 115 m l.c
Deck Tanks:	NO
Inert Gas Plant:	Maritime Protection AS (Dry IGG) 5000 Nm ³ /h O ₂ : 0.5 vol %
Cargo Vaporizer:	One (1) Shell & Tube type
Bow Thruster:	NO
Cargo Manifolds:	V-2A, L-2A, L-1, V-1, V-2 L-2 Liquid Line 14" ANSI 300lb Vapour line 10" ANSI 150lb

INDICATIVE CAPACITIES OF CARGO TANKS

TANK No.	TANK No.		N-BUTANE	C-PROPANE	BUTADIENE
	100%	98%	S.G. 0.602 T°C -0.5	S.G. 0.585 T°C -48.3	S.G. 0.610 T°C -4.5
1 S&P	18,003.319	17,643.253	10,621.2	10,321.3	10,762.38
2 S&P	22,572.931	22,121.472	13,317.1	12,941.1	13,494.09
3 S&P	22,549.765	22,098.770	13,303.4	12,927.8	13,480.24
4 S&P	20,952.225	20,553.181	12,352.5	12,023.6	12,537.44
TOTAL	84,244.832 m ³	82,396.676 m ³	49,602.8 mtns	48,202.0 mtns	50,262.0 mtns